



IACCE

**International Association for a
Carbon-Neutral Circular
Economy (IACCE)**

ia2c.org

Global Trends

Global domestic output has increased significantly over the past 100 years, improving standards of living, and lifting hundreds of millions of people out of poverty. However, this has been enabled by an unsustainable demand for natural resources. Resource use has tripled since 1970 and is expected to double again by 2050 at current trends.

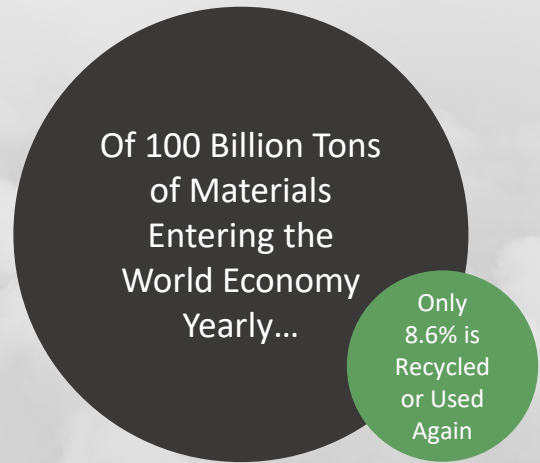
Our current linear extract, consume, and throwaway model of consumption is simply unsustainable. Current levels of resource use would require 1.5 earths to support the status-quo and are having devastating impacts on our planet.



70% average decline in birds, amphibians, mammals, fish, and reptiles since 1970



90% of biodiversity loss and water stress are caused by resource extraction and processing



There has been an average decline of nearly 70% of birds, amphibians, mammals, fish, and reptiles since 1970 due to extensive ecological system damage and habitat loss. Furthermore, resource extraction and processing accounts for 90 per cent of biodiversity loss and water stress and contributes about half of global greenhouse gas emissions.

Endless growth that comes at the expense of our planet is simply not sustainable. Unchecked climate-change and ecosystem collapse threatens the very survival of our species. Therefore, it is more urgent than ever that humankind shifts to more sustainable models to meet the needs of the needs of the 8.5 billion people expected to inhabit our planet by 2030.

“The findings are clear: Our relationship with nature is broken.”

- World Wildlife Fund Inc.

A Carbon-neutral Circular Economy

The Solution?

The development of a circular, science-driven economy entails gradually decoupling economic activity from the consumption of finite resources and by designing waste out of the system. This process mimics nature, in which waste from one process is the feedstock for another. A circular economy is regenerative by design and redefines growth by focusing on positive society-wide benefits. The world is changing; organizations and governments need to adapt in order to meet increasingly stringent environmental and social expectations.

The development of a circular economy also presents significant opportunities. It has been estimated that the transition to a circular economy could unlock \$4.5 trillion USD in GDP growth worldwide and create millions of new jobs and new companies. A cornerstone of the circular economy is recovering resources and generating value-added products from materials that are currently considered “waste”.



Transition to a circular economy has been estimated to \$4.5 trillion USD in GDP growth worldwide yearly.

Development of a Carbon-neutral Circular Economy

A circular economy aims to make better use of natural materials and resources by improving the design of materials, processes, products, and systems. This is achieved by:

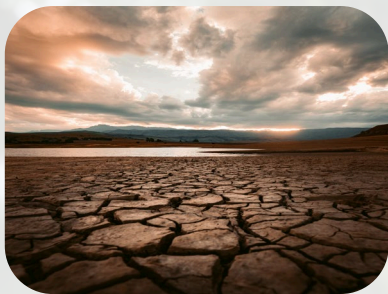
- Making better use of finite resources
- Reducing emissions from new and existing processes
- Protecting human health and ecological biodiversity
- Creating new economic activities and green jobs



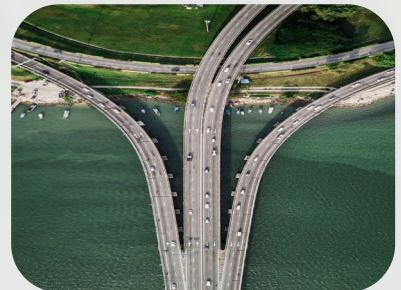
International Association for a Carbon-Neutral Circular Economy (IACCE)

Purpose:

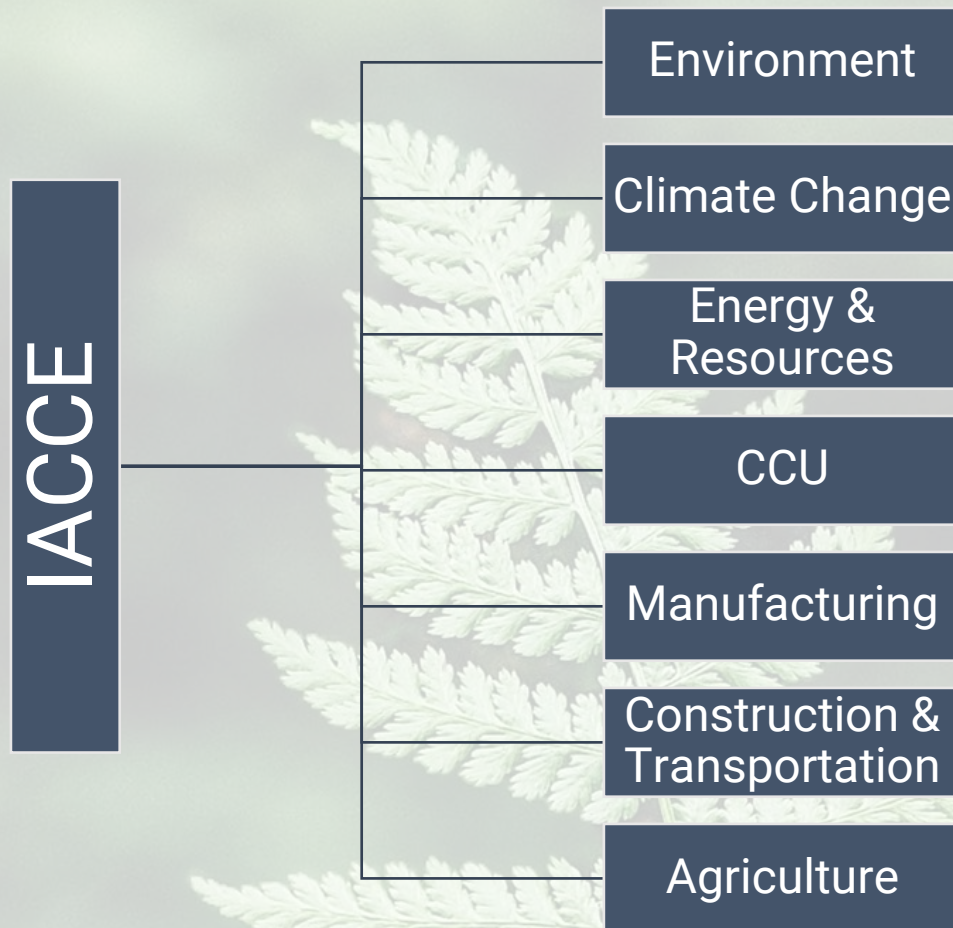
IACCE is an international organization established to facilitate the development of a carbon-neutral circular economy. It promotes the development of advanced knowledge, technologies, and policies in partnership with industry, academia and municipalities.



Focus Areas: Environment, energy, climate change, manufacturing, construction, agriculture and other industries associated with human and ecosystem health



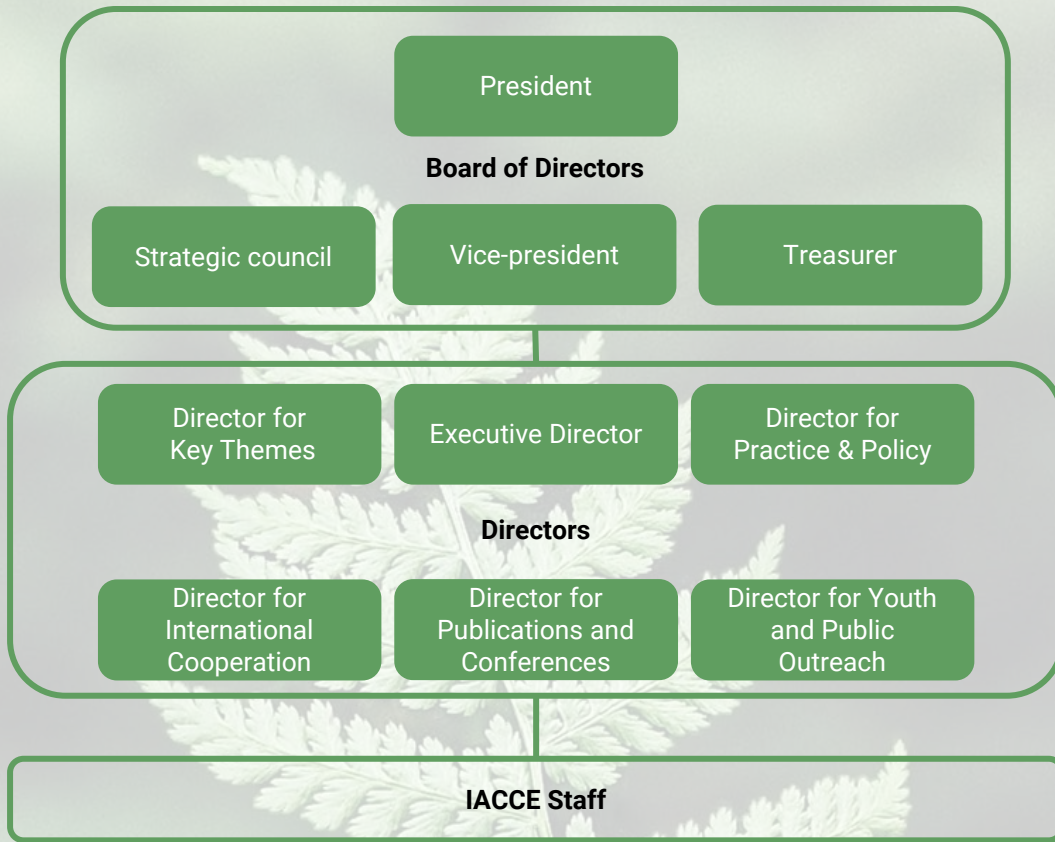
Main Themes and Sectors



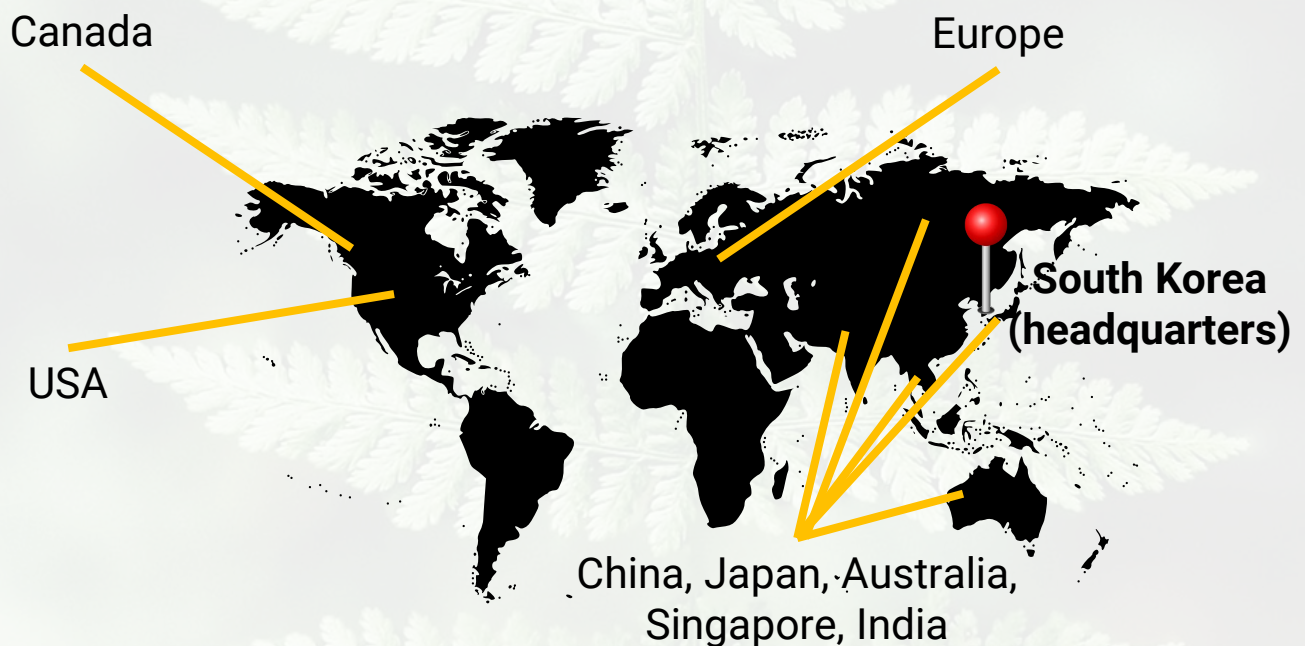
Key Activity Areas

- Hosting national and international conferences
- Global networking
- Publishing journals and reports
- Participation and support of collaboration projects among industry, academia and government
- Youth and public outreach

Society Composition



Members by Country



Industry and Government Partners

- KENTECH
- Veolia
- GHD
- Wood
- Enbridge
- Ontario Geonomics
- EcoPoly Solutions
- SIT



Get Involved

We are actively looking for new industry, academic, and government partners. Please visit our website or contact info@ia2ce.org for more information.



IACCE

**International Association for a
Carbon-Neutral Circular Economy**

**IACCE North America
3551 Rue Ashby, Suite #170
Saint Laurent, Quebec Canada
H4R 2K3**

ia2c.org

**© 2021, IACCE
All Rights Reserved**